

FOR LEASE

CENTERPOINTE

19712, 19722, 19732 & 19762 MacArthur Blvd. • Irvine, California

±2,624 SF OFFICE SUITE AVAILABLE



Exclusively listed by:

BRIAN GARBUTT

SVP/Principal

License ID# 01215482

949.724.4721

bgarbutt@lee-associates.com

PROPERTY FEATURES

- Located in prestigious Centerpointe office project at the corner of MacArthur and Jamboree - "Main & Main" location
- Excellent access to the 405, 73 and 55 Freeways, restaurants and the Equinox health club next door
- Minutes from Orange County Airport, Newport Center and University of California Irvine
- Free 4:1000 surface parking

AVAILABILITIES

19732 MacArthur Suite 140: ±2,624 SF

» Reception, five (5) private offices, conference room, breakroom, open area and restroom.

 **LEE &
ASSOCIATES**
NEWPORT BEACH

DISCLAIMER: The information contained herein has been obtained from the property owner or other third party and is provided to you without verification as to accuracy. We (Lee & Associates, its brokers, employees, agents, principals, officers, directors and affiliates) make no warranty or representation regarding the information, property, or transaction. You and your attorneys, advisors and consultants should conduct your own investigation of the property and transaction.

 **PROPERTY GROUP**
MAXIMIZING PROPERTY VALUES™

FOR LEASE

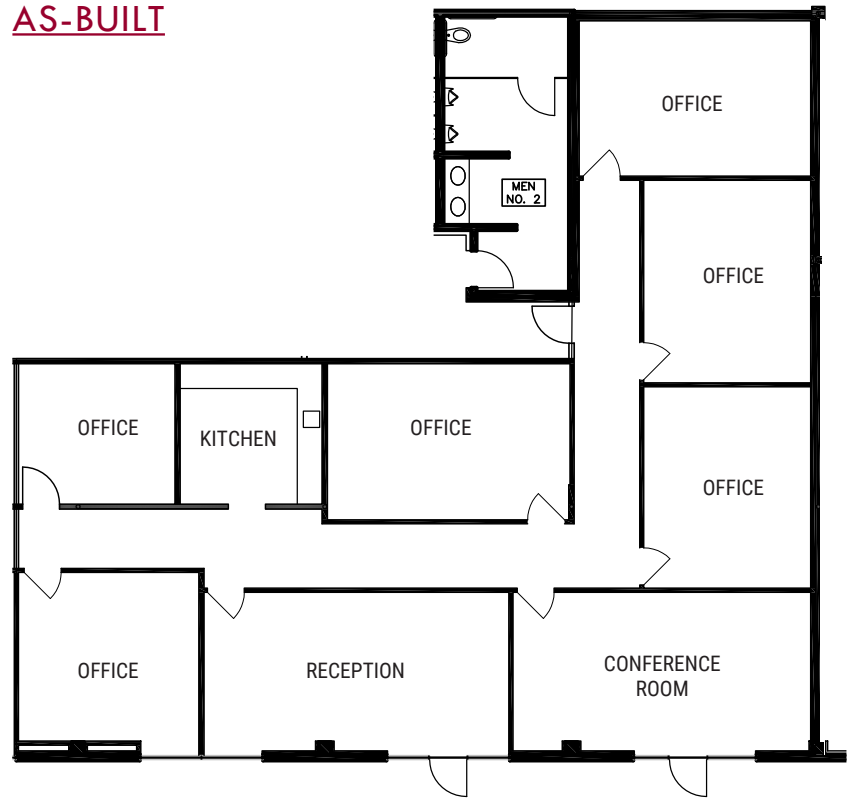
CENTERPOINTE

19732 MacArthur Blvd. • Irvine, California

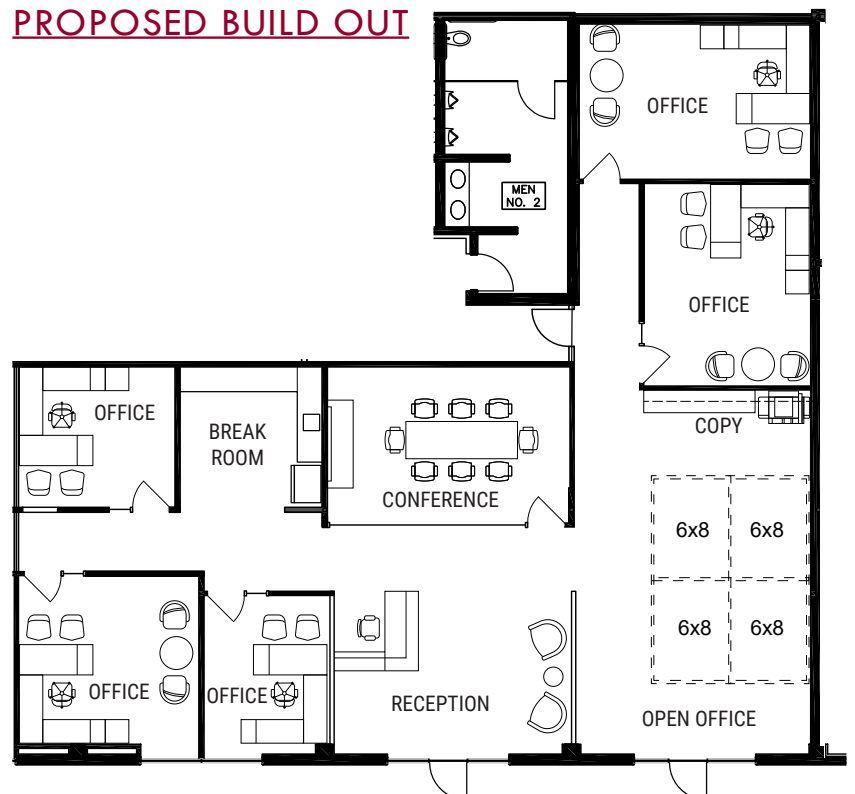
±2,624 SF OFFICE SUITE AVAILABLE



AS-BUILT



PROPOSED BUILD OUT



Exclusively listed by:

BRIAN GARBUTT

SVP/Principal

License ID# 01215482

949.724.4721

bgarbutt@lee-associates.com

LEE & ASSOCIATES
NEWPORT BEACH

DISCLAIMER: The information contained herein has been obtained from the property owner or other third party and is provided to you without verification as to accuracy. We (Lee & Associates, its brokers, employees, agents, principals, officers, directors and affiliates) make no warranty or representation regarding the information, property, or transaction. You and your attorneys, advisors and consultants should conduct your own investigation of the property and transaction.

WV PROPERTY GROUP
MAXIMIZING PROPERTY VALUES™